

YOU CAN BECOME A CANCER RESEARCHER

NCI's Continuing Umbrella of Research Experiences (CURE) program offers a unique series of biomedical research training and career development funding opportunities for scholars from diverse racial/ethnic or disadvantaged backgrounds, or those with disabilities.

IF THIS IS YOU...

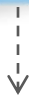
High School/
Undergraduate



Predocloral



Postdoctoral



Investigator



...HERE'S WHAT CURE OFFERS

- Diversity Research Supplements
- Supplements to the CURE (P30S)

- Diversity Research Supplements
- National Research Service Awards (NRSA) (F31)
- Supplements to the CURE (R25TS, T32S)

- Diversity Research Supplements
- Mentored Career Development Awards (K01, K08, K23)
- Non-Mentored Career Development Award (K22)
- Supplements to the CURE (R25TS, T32S, K12S)

- Diversity Research Supplements
- Mentored Career Development Awards (K01, K08, K23)
- Non-Mentored Career Development Award (K22)
- Supplements to the CURE (K12S)
- Exploratory Grant (Diversity) (R21)

BENEFITS



Take advantage of continuous funded training, career navigation, and mentoring



Work with supportive academic mentors and NCI program directors



Receive protected time for research



Access state-of-the-art research and technology



Participate in mock scientific reviews



Build your research grant writing, publication, and interviewing skills



Network with NIH/NCI staff and your peers

CURE SUCCESSES



1,700+ publications in peer-reviewed scientific journals written by CURE scholars



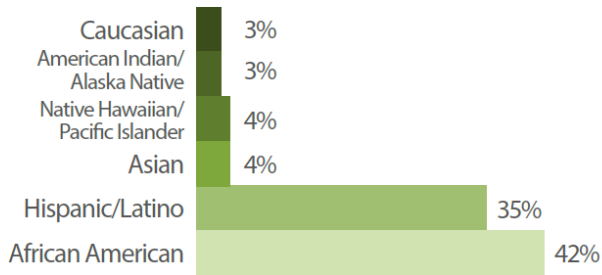
98% CURE F31 predoctoral scholars who completed or are in the process of completing doctoral degrees



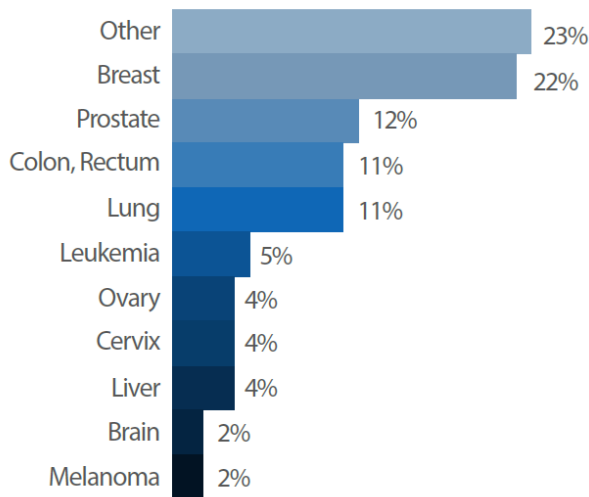
25% of CURE scholars with mock review experience, prior research grants, and publications are likely to become independent researchers

JUST THE FACTS

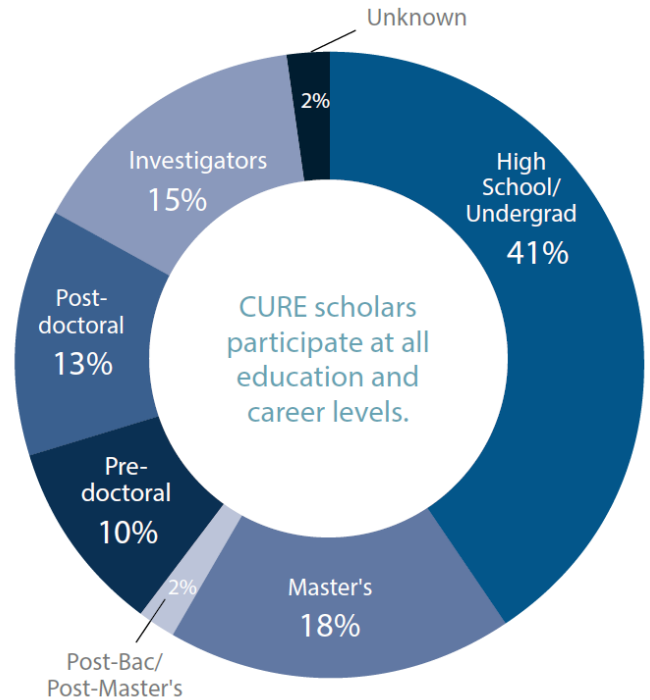
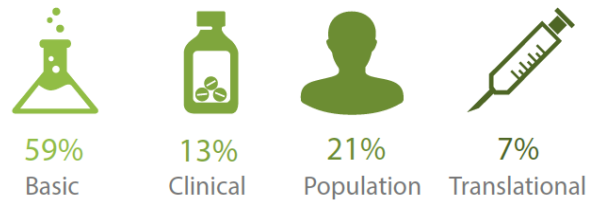
CURE scholars are a diverse mix of people.



CURE scholars research many different cancers.



CURE scholars focus on different types of research.



TESTIMONIALS



"Everyone needs to know, particularly in the black community, that if you want to go to school and you want to be successful, sports and entertainment aren't the only ways. We have a wealth of opportunities, like CURE, that you can use to get you there."

Eladio Abreu, Ph.D.
Emory University School of Medicine
Diversity Supplement Awardee



"The CURE training experience really gave me the skills necessary to write strong grants early on."

Dr. Elva Arredondo/ Associate Professor
San Diego State University – School of Public Health
F31, R21, R01 Awardee



"Having the K22 award really sped up the time that I could develop and start the lab [and] get additional funding"

Dr. Annette Khaled / Associate Professor
University of Central Florida
K22 Awardee

27%
Percentage of CURE scholars who research Cancer Health Disparities

3,041
Total number of CURE scholars from high school through early-stage investigators (FY2001-2012)

HOW TO APPLY



Go to Cancer.gov/cure-program and contact a CURE Program Director to learn more



Center to Reduce Cancer Health Disparities
within the National Cancer Institute at the National Institutes of Health
9609 Medical Center Drive, 6th Floor, West Tower, Rockville, MD 20850
<http://www.cancer.gov/crccd>
Source: CRCHD Evaluation Report and Program Analysis

