

EXPLORATORY/DEVELOPMENTAL GRANTS PROGRAM FOR BASIC CANCER RESEARCH IN CANCER HEALTH DISPARITIES (R21/R01)

Overview

This Funding Opportunity Announcement (FOA) encourages research grant applications from investigators interested in conducting basic research into the causes and mechanisms of cancer health disparities. This FOA is also designed to facilitate the growth of a nationwide cohort of scientists with a high level of basic research expertise in cancer health disparities research who can develop resources and tools necessary for conducting such research.

Mechanisms of Support/Awards

R01 and R21 award mechanisms will be supported by this funding opportunity. The total project period for applications using the R01 award mechanism may not exceed 5 years; direct costs are limited to \$250,000/year. The R21 award mechanism may not exceed 2 years; direct costs are limited to \$275,000 over a 2-year period, with no more than \$200,000 in direct costs allowed in any single year. The R01 and R21 applications are not renewable.

Research Objectives

Applications should focus on basic mechanistic research to investigate the biological/genetic factors associated with cancer health disparities.

AT A GLANCE

Submission Deadline:
June 17; November 17, yearly

Award Budget:
\$250,000/year direct costs for up to 5 years (R01)
\$275,000 direct costs for up to 2 years (R21)

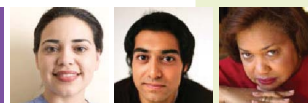
For this FOA, NCI is particularly interested in the interplay of race/ethnicity and cancer biology. These awards will provide support for developing and testing new methodologies, prevention strategies, and research technology, as well as secondary analysis of existing data, self-contained research projects, and innovative studies that provide a basis for more extended research in cancer disparities. Research topics may include, but are not limited to, the following examples:

- Ethnic differences in HPV strain types/ infection prevalence
- Polymorphisms in liver detoxification enzymes
- Differences in gene expression profiles in triple negative breast tumors in African-American women
- Polymorphisms and copy number variations in key cellular processes related to cancer disparities.

For the full text of these PARs, visit:

<http://grants.nih.gov/grants/guide/pa-files/PAR-15-092.html> (R21)

<http://grants.nih.gov/grants/guide/pa-files/PAR-15-093.html> (R01)



BASIC CANCER RESEARCH IN CANCER HEALTH DISPARITIES (R21/R01)

Eligibility Requirements

Any individual with the skills, knowledge, and resources necessary to carry out the proposed basic research in cancer health disparities is invited to work with his/her organization to develop an application for support as the Program Director/Principal Investigator (PD/PI). Individuals from underrepresented racial and ethnic groups as well as individuals with disabilities are always encouraged to apply for NIH support.

Researchers focused on behavioral or community-based projects are not eligible for this award.

Review

Applications will be evaluated for scientific and technical merit by appropriate Scientific Review Group(s) using the stated review criteria in the FOA. Following initial peer review, recommended applications will receive a second level of review by the National Cancer Advisory Board. Scientific and technical merit of the proposed project as determined by peer review, availability of funds, and relevance of the proposed project to program priorities will be considered in making funding decisions.

Further Assistance

Grants.gov Customer Support

Telephone: 800-518-4726

Email: support@grants.gov

GrantsInfo

Telephone: 301-435-0714

Email: grantsInfo@od.nih.gov

eRA Commons Help Desk

Telephone: 301-402-7469 or 866-504-9552

Email: commons@od.nih.gov

Grant Writing Tip Sheets

http://grants.nih.gov/grants/grant_tips.htm

Inquiries

Center to Reduce Cancer Health Disparities

Tiffany Wallace, Ph.D.

Liz Perruccio, Ph.D., M.S.

Center to Reduce Cancer Health Disparities

National Cancer Institute

9609 Medical Center Drive

West Tower, Room 6W256, 6W238

Bethesda, MD 20892

Email: tiffany.wallace@nih.gov

liz.perruccio@nih.gov

Division of Cancer Biology

Elizabeth Woodhouse

Division of Cancer Biology

National Cancer Institute

9609 Medical Center Drive, MSC 9748

Sixth Floor, West Tower, 6W416

Bethesda, MD 20892

Email: woodhousee@mail.nih.gov

Financial/Grants Management

Emily Tran

Office of Grants Administration

National Cancer Institute

9609 Medical Center Drive, MSC 9710

Second Floor, West Tower, 2W344

Bethesda, MD 20892

Email: trane@mail.nih.gov